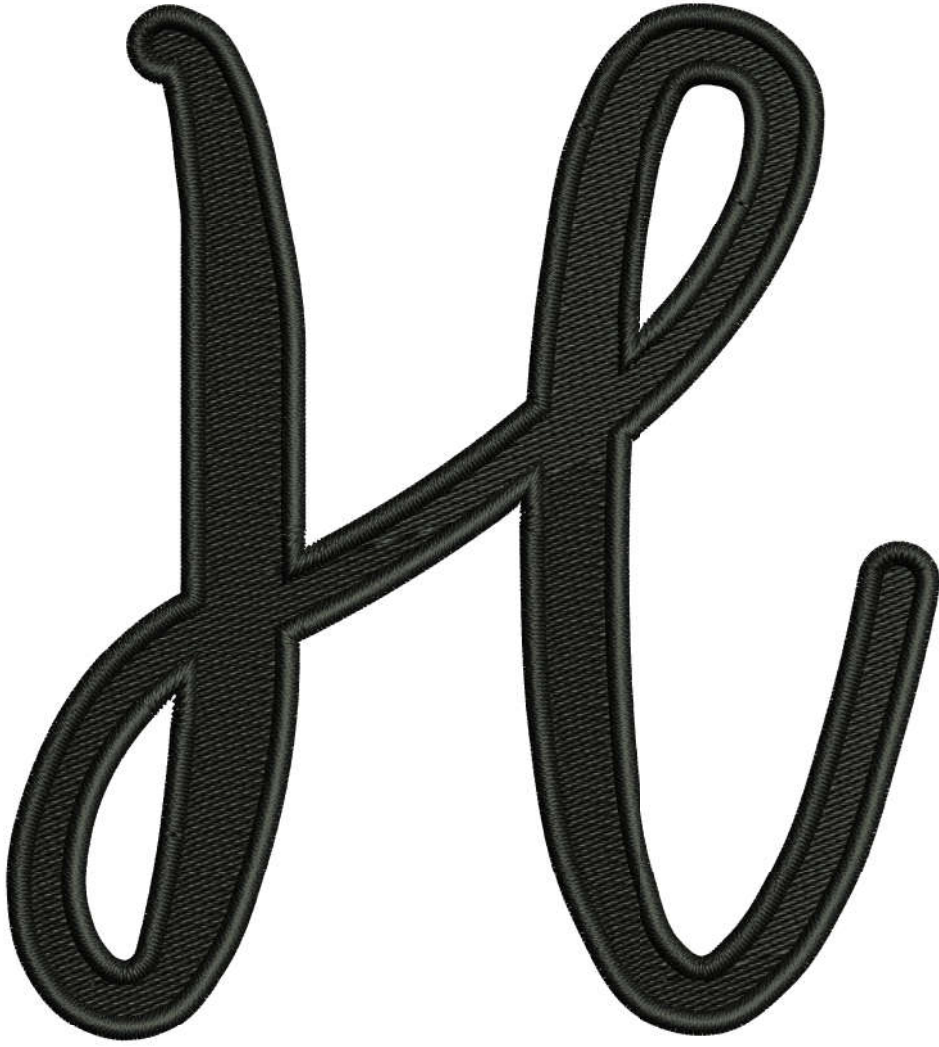


Production Worksheet

Wilcom TrueSizer
Design: E-20694 4x4
Colorway: Madeira Classic 40

Stitches: 10077
Colors: 1
Height: 3.80 in
Width: 3.41 in
Zoom: 1.42



Machine format: Tajima
Color changes: 0
Stops: 1
Trims: 3
Auto fabric: Fabric Name
Required stabilizer: Stabilizer
Left: 43.3 mm
Right: 43.3 mm
Up: 48.3 mm
Down: 48.3 mm
EndX: 0.00 in
EndY: 0.00 in
Area: 12.98 in²
Max Stitch: 6.9 mm
Min Stitch: 0.3 mm
Max jump: 7.0 mm
Total Thread: 179.97ft
Total bobbin: 67.08ft

Stop Sequence:

#	N#	St.	Code	Description	Brand
1.	14	■	10075	1000 Emerald Black	Madeira Classic 40

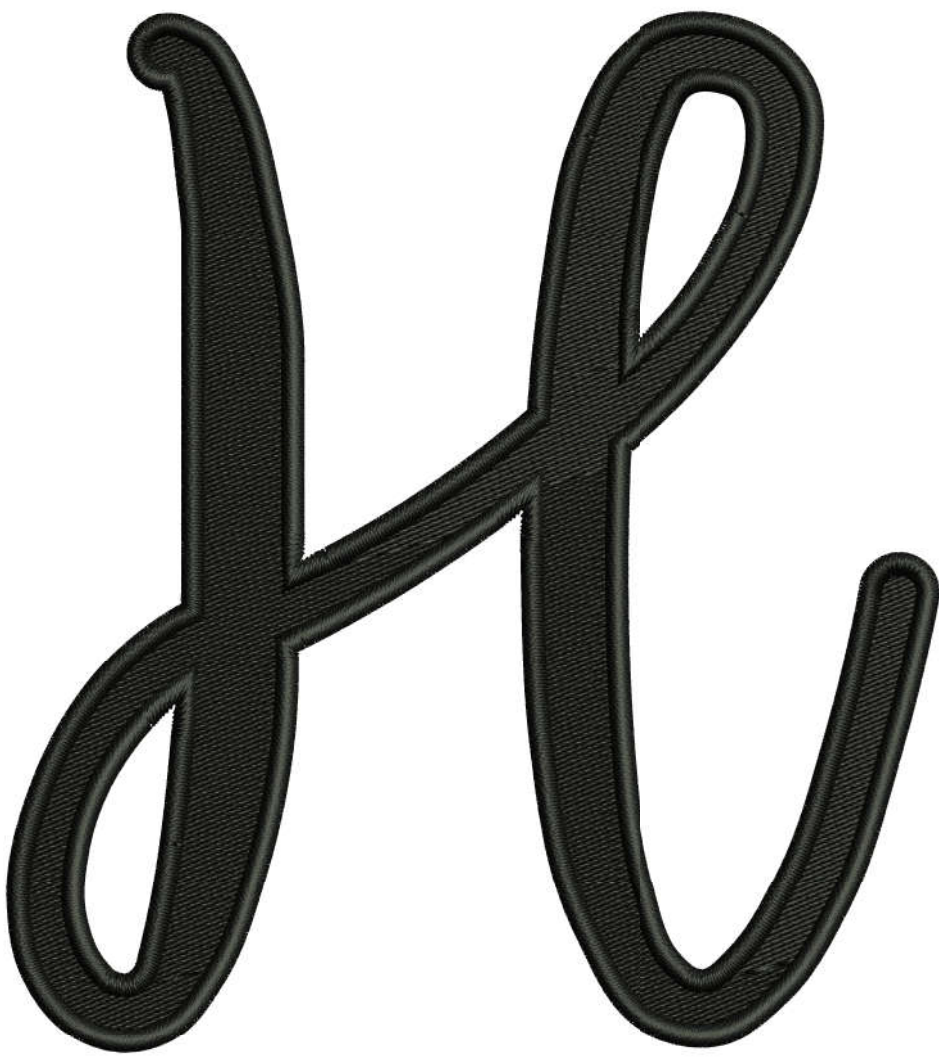
Production Worksheet

Wilcom TrueSizer
Design: E-20694 5x5
Colorway: Madeira Classic 40

Stitches: 13981
Colors: 1
Height: 4.80 in
Width: 4.29 in
Zoom: 1.13



Machine format: Tajima
Color changes: 0
Stops: 1
Trims: 3
Auto fabric: Fabric Name
Required stabilizer: Stabilizer
Left: 54.5 mm
Right: 54.5 mm
Up: 61.0 mm
Down: 61.0 mm
EndX: 0.00 in
EndY: 0.00 in
Area: 20.62 in²
Max Stitch: 6.5 mm
Min Stitch: 0.3 mm
Max jump: 6.5 mm
Total Thread: 267.01ft
Total bobbin: 103.48ft



Stop Sequence:

#	N#	St.	Code	Description	Brand
1.	14	■	13979	1000 Emerald Black	Madeira Classic 40

Production Worksheet

Wilcom TrueSizer
Design: E-20694 8x8
Colorway: Madeira Classic 40

Stitches: 29258
Colors: 1
Height: 7.80 in
Width: 7.00 in
Zoom: 0.69



Machine format: Tajima
Color changes: 0
Stops: 1
Trims: 3
Auto fabric: Fabric Name
Required stabilizer: Stabilizer
Left: 88.9 mm
Right: 88.9 mm
Up: 99.1 mm
Down: 99.1 mm
EndX: 0.00 in
EndY: 0.00 in
Area: 54.65 in²
Max Stitch: 6.9 mm
Min Stitch: 0.3 mm
Max jump: 6.8 mm
Total Thread: 627.03ft
Total bobbin: 257.42ft



Stop Sequence:

#	N#	St.	Code	Description	Brand
1.	14	■	29256	1000 Emerald Black	Madeira Classic 40