

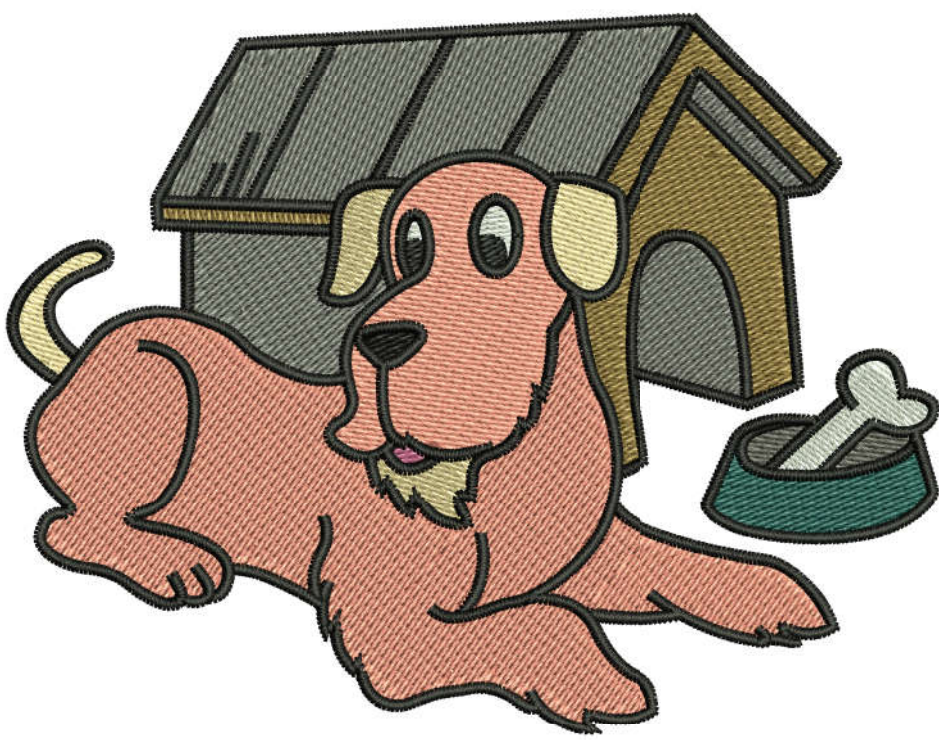
Production Worksheet

Wilcom TrueSizer
 Design: E-20760 4x4
 Colorway: Madeira Classic 40

Stitches: 19392
 Colors: 9
 Height: 2.95 in
 Width: 3.80 in
 Zoom: 1.27



Machine format: Tajima
 Color changes: 11
 Stops: 12
 Trims: 19
 Auto fabric: Fabric Name
 Required stabilizer: Stabilizer
 Left: 48.3 mm
 Right: 48.3 mm
 Up: 37.4 mm
 Down: 37.4 mm
 EndX: 0.00 in
 EndY: 0.00 in
 Area: 11.20 in²
 Max Stitch: 12.0 mm
 Min Stitch: 0.3 mm
 Max jump: 6.9 mm
 Total Thread: 322.24ft
 Total bobbin: 113.03ft



Stop Sequence:

| # | N# | St. | Code | Description | Brand |
|-----|----|--------|------|---------------|--------------------|
| 1. | 18 | ■ 2836 | 1287 | Mlde Grey | Madeira Classic 40 |
| 2. | 12 | ■ 1725 | 1191 | Brown | Madeira Classic 40 |
| 3. | 14 | ■ 2151 | 1000 | Emerald Black | Madeira Classic 40 |
| 4. | 16 | ■ 975 | 1066 | Fune / Sand | Madeira Classic 40 |
| 5. | 6 | ■ 73 | 1309 | Pink | Madeira Classic 40 |
| 6. | 13 | □ 217 | 1001 | Super White | Madeira Classic 40 |
| 7. | 1 | ■ 5499 | 1020 | Peach | Madeira Classic 40 |
| 8. | 14 | ■ 4116 | 1000 | Emerald Black | Madeira Classic 40 |
| 9. | 13 | □ 358 | 1001 | Super White | Madeira Classic 40 |
| 10. | 22 | ■ 255 | 1239 | Dark Grey | Madeira Classic 40 |
| 11. | 21 | ■ 427 | 1290 | BLUE | Madeira Classic 40 |
| 12. | 14 | ■ 758 | 1000 | Emerald Black | Madeira Classic 40 |

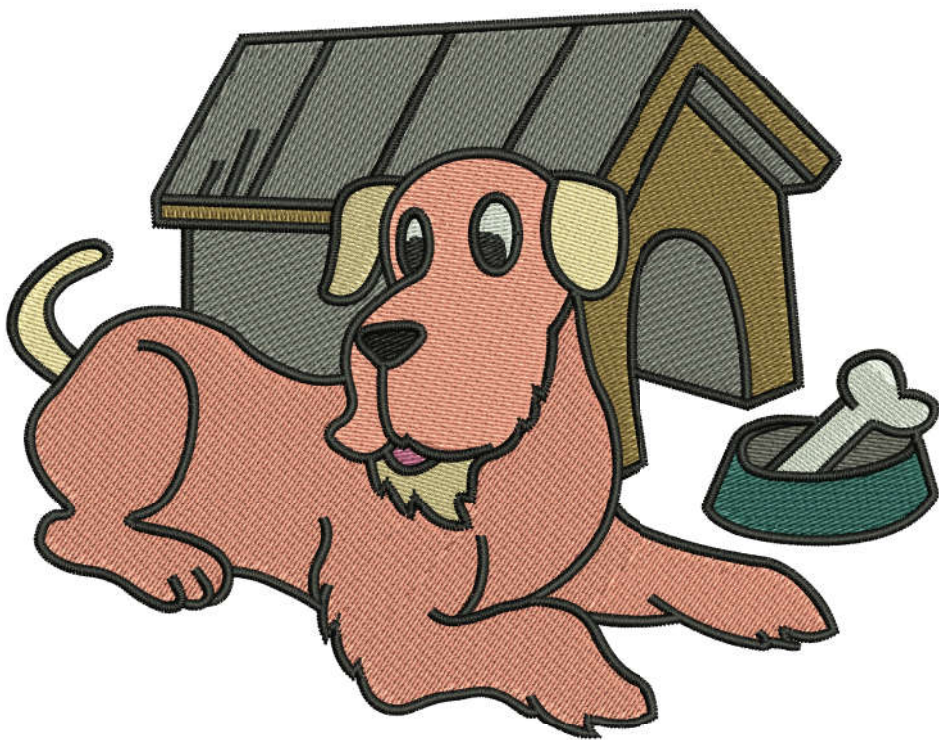
Production Worksheet

Wilcom TrueSizer
Design: E-20760 5x5
Colorway: Madeira Classic 40

Stitches: 27190
Colors: 9
Height: 3.77 in
Width: 4.80 in
Zoom: 1.01



Machine format: Tajima
Color changes: 11
Stops: 12
Trims: 19
Auto fabric: Fabric Name
Required stabilizer: Stabilizer
Left: 61.0 mm
Right: 61.0 mm
Up: 47.8 mm
Down: 47.8 mm
EndX: 0.00 in
EndY: 0.00 in
Area: 18.09 in²
Max Stitch: 12.0 mm
Min Stitch: 0.3 mm
Max jump: 6.8 mm
Total Thread: 477.47ft
Total bobbin: 174.69ft



Stop Sequence:

| # | N# | St. | Code | Description | Brand |
|-----|----|-----|------|--------------------|--------------------|
| 1. | 18 | ■ | 4317 | 1287 Mlde Grey | Madeira Classic 40 |
| 2. | 12 | ■ | 2396 | 1191 Brown | Madeira Classic 40 |
| 3. | 14 | ■ | 2753 | 1000 Emerald Black | Madeira Classic 40 |
| 4. | 16 | ■ | 1349 | 1066 Fune / Sand | Madeira Classic 40 |
| 5. | 6 | ■ | 105 | 1309 Pink | Madeira Classic 40 |
| 6. | 13 | □ | 263 | 1001 Super White | Madeira Classic 40 |
| 7. | 1 | ■ | 8307 | 1020 Peach | Madeira Classic 40 |
| 8. | 14 | ■ | 5265 | 1000 Emerald Black | Madeira Classic 40 |
| 9. | 13 | □ | 502 | 1001 Super White | Madeira Classic 40 |
| 10. | 22 | ■ | 349 | 1239 Dark Grey | Madeira Classic 40 |
| 11. | 21 | ■ | 620 | 1290 BLUE | Madeira Classic 40 |
| 12. | 14 | ■ | 962 | 1000 Emerald Black | Madeira Classic 40 |

Production Worksheet

Wilcom TrueSizer
 Design: E-20760 6x6
 Colorway: Madeira Classic 40

Stitches: 35707
 Colors: 9
 Height: 4.54 in
 Width: 5.80 in
 Zoom: 0.82



Machine format: Tajima
 Color changes: 11
 Stops: 12
 Trims: 19
 Auto fabric: Fabric Name
 Required stabilizer: Stabilizer
 Left: 73.7 mm
 Right: 73.7 mm
 Up: 57.6 mm
 Down: 57.6 mm
 EndX: 0.00 in
 EndY: 0.00 in
 Area: 26.32 in²
 Max Stitch: 10.9 mm
 Min Stitch: 0.3 mm
 Max jump: 6.9 mm
 Total Thread: 653.76ft
 Total bobbin: 246.04ft

Stop Sequence:

| # | N# | St. | Code | Description | Brand |
|-----|----|-------|------|---------------|--------------------|
| 1. | 18 | 5950 | 1287 | Mlde Grey | Madeira Classic 40 |
| 2. | 12 | 3214 | 1191 | Brown | Madeira Classic 40 |
| 3. | 14 | 3344 | 1000 | Emerald Black | Madeira Classic 40 |
| 4. | 16 | 1794 | 1066 | Fune / Sand | Madeira Classic 40 |
| 5. | 6 | 125 | 1309 | Pink | Madeira Classic 40 |
| 6. | 13 | 328 | 1001 | Super White | Madeira Classic 40 |
| 7. | 1 | 11435 | 1020 | Peach | Madeira Classic 40 |
| 8. | 14 | 6388 | 1000 | Emerald Black | Madeira Classic 40 |
| 9. | 13 | 663 | 1001 | Super White | Madeira Classic 40 |
| 10. | 22 | 451 | 1239 | Dark Grey | Madeira Classic 40 |
| 11. | 21 | 853 | 1290 | BLUE | Madeira Classic 40 |
| 12. | 14 | 1160 | 1000 | Emerald Black | Madeira Classic 40 |



Production Worksheet

Wilcom TrueSizer
 Design: E-20760 8x8
 Colorway: Madeira Classic 40

Stitches: 55797
 Colors: 9
 Height: 6.06 in
 Width: 7.80 in
 Zoom: 0.61



Machine format: Tajima
 Color changes: 11
 Stops: 12
 Trims: 22
 Auto fabric: Fabric Name
 Required stabilizer: Stabilizer
 Left: 99.0 mm
 Right: 99.0 mm
 Up: 77.0 mm
 Down: 77.0 mm
 EndX: 0.00 in
 EndY: 0.00 in
 Area: 47.27 in²
 Max Stitch: 7.0 mm
 Min Stitch: 0.3 mm
 Max jump: 7.0 mm
 Total Thread: 1088.41ft
 Total bobbin: 425.50ft



Stop Sequence:

| # | N# | St. | Code | Description | Brand |
|-----|----|-----|------------|---------------|--------------------|
| 1. | 18 | ■ | 9970 1287 | Mlde Grey | Madeira Classic 40 |
| 2. | 12 | ■ | 5177 1191 | Brown | Madeira Classic 40 |
| 3. | 14 | ■ | 4562 1000 | Emerald Black | Madeira Classic 40 |
| 4. | 16 | ■ | 2831 1066 | Fune / Sand | Madeira Classic 40 |
| 5. | 6 | ■ | 183 1309 | Pink | Madeira Classic 40 |
| 6. | 13 | □ | 497 1001 | Super White | Madeira Classic 40 |
| 7. | 1 | ■ | 19195 1020 | Peach | Madeira Classic 40 |
| 8. | 14 | ■ | 8688 1000 | Emerald Black | Madeira Classic 40 |
| 9. | 13 | □ | 1016 1001 | Super White | Madeira Classic 40 |
| 10. | 22 | ■ | 714 1239 | Dark Grey | Madeira Classic 40 |
| 11. | 21 | ■ | 1380 1290 | BLUE | Madeira Classic 40 |
| 12. | 14 | ■ | 1582 1000 | Emerald Black | Madeira Classic 40 |