

Production Worksheet

Wilcom TrueSizer
Design: E-20180 4x4
Colorway: Madeira Classic 40

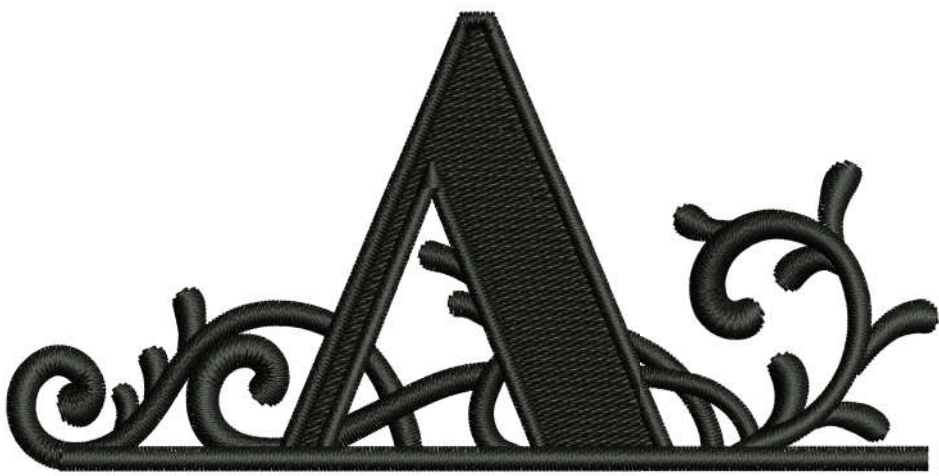
Stitches: 11223
Colors: 1
Height: 3.74 in
Width: 3.80 in
Zoom: 1.27



Machine format: Tajima
Color changes: 0
Stops: 1
Trims: 2
Auto fabric: Fabric Name
Required stabilizer: Stabilizer
Left: 48.3 mm
Right: 48.3 mm
Up: 47.5 mm
Down: 47.5 mm
EndX: 0.00 in
EndY: 0.00 in
Area: 14.22 in²
Max Stitch: 6.5 mm
Min Stitch: 0.3 mm
Max jump: 6.5 mm
Total Thread: 195.56ft
Total bobbin: 71.86ft

Stop Sequence:

#	N#	St.	Code	Description	Brand
1.	14	■	11221	1000 Emerald Black	Madreira Classic 40



Production Worksheet

Wilcom TrueSizer
Design: E-20180 5x5
Colorway: Madeira Classic 40

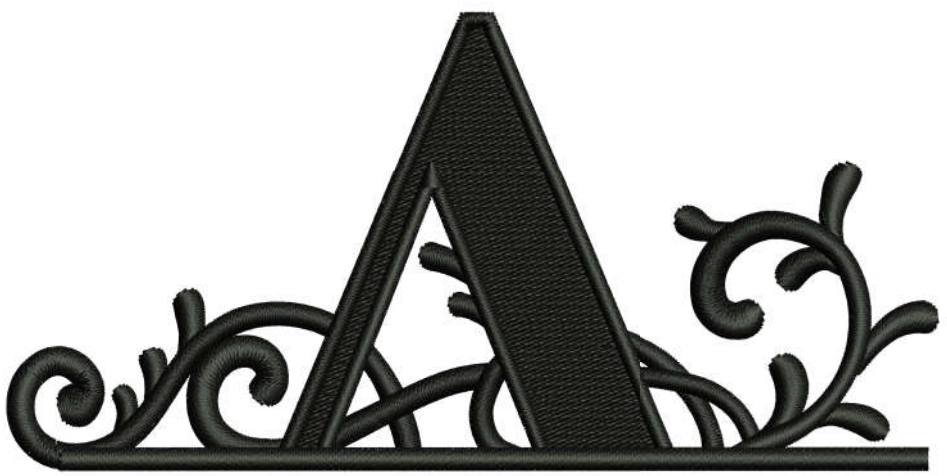
Stitches: 15060
Colors: 1
Height: 4.72 in
Width: 4.80 in
Zoom: 1.01



Machine format: Tajima
Color changes: 0
Stops: 1
Trims: 2
Auto fabric: Fabric Name
Required stabilizer: Stabilizer
Left: 61.0 mm
Right: 61.0 mm
Up: 59.9 mm
Down: 59.9 mm
EndX: 0.00 in
EndY: 0.00 in
Area: 22.66 in²
Max Stitch: 6.6 mm
Min Stitch: 0.3 mm
Max jump: 6.8 mm
Total Thread: 286.07ft
Total bobbin: 110.57ft

Stop Sequence:

#	N#	St.	Code	Description	Brand
1.	14	■	15058	1000 Emerald Black	Madeira Classic 40



Production Worksheet

Wilcom TrueSizer
Design: E-20180 6x6
Colorway: Madeira Classic 40

Stitches: 19559
Colors: 1
Height: 5.69 in
Width: 5.80 in
Zoom: 0.84



Machine format: Tajima
Color changes: 0
Stops: 1
Trims: 4
Auto fabric: Fabric Name
Required stabilizer: Stabilizer
Left: 73.7 mm
Right: 73.7 mm
Up: 72.2 mm
Down: 72.2 mm
EndX: 0.00 in
EndY: 0.00 in
Area: 33.01 in²
Max Stitch: 6.9 mm
Min Stitch: 0.3 mm
Max jump: 6.9 mm
Total Thread: 398.97ft
Total bobbin: 159.98ft

Stop Sequence:

#	N#	St.	Code	Description	Brand
1.	14	■	19557	1000 Emerald Black	Madeira Classic 40



Production Worksheet

Wilcom TrueSizer
Design: E-20180 8x8
Colorway: Madeira Classic 40

Stitches: 29587
Colors: 1
Height: 7.62 in
Width: 7.80 in
Zoom: 0.62



Machine format: Tajima
Color changes: 0
Stops: 1
Trims: 2
Auto fabric: Fabric Name
Required stabilizer: Stabilizer
Left: 99.1 mm
Right: 99.1 mm
Up: 96.8 mm
Down: 96.8 mm
EndX: 0.00 in
EndY: 0.00 in
Area: 59.45 in²
Max Stitch: 8.2 mm
Min Stitch: 0.3 mm
Max jump: 6.8 mm
Total Thread: 674.22ft
Total bobbin: 284.10ft

Stop Sequence:

#	N#	St.	Code	Description	Brand
1.	14	■	29585	1000 Emerald Black	Madeira Classic 40

