

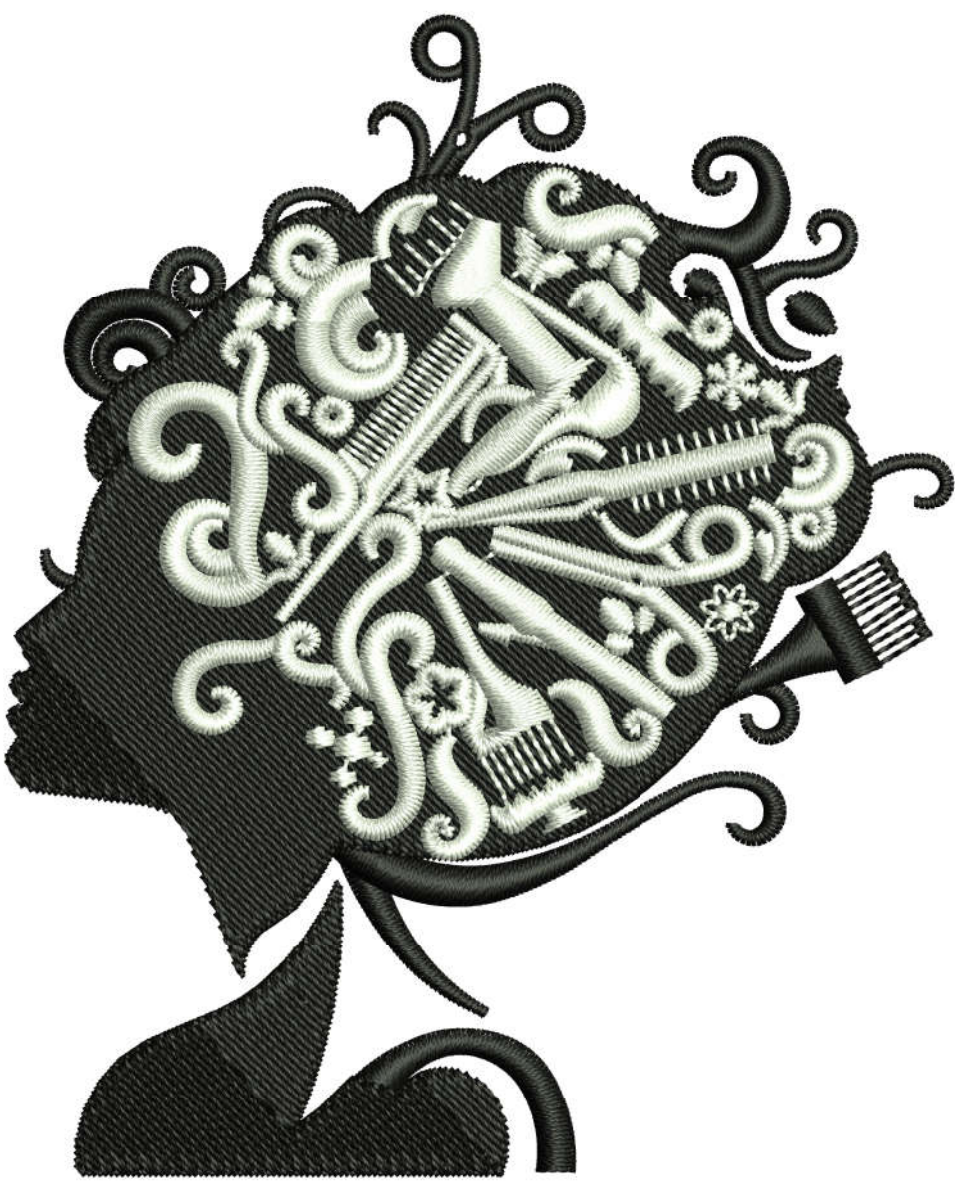
# Production Worksheet

Wilcom TrueSizer  
Design: E-20308 4x4  
Colorway: Madeira Classic 40

Stitches: 16525  
Colors: 2  
Height: 3.82 in  
Width: 3.10 in  
Zoom: 1.58



Machine format: Tajima  
Color changes: 1  
Stops: 2  
Trims: 11  
Auto fabric: Fabric Name  
Required stabilizer: Stabilizer  
Left: 39.4 mm  
Right: 39.4 mm  
Up: 48.5 mm  
Down: 48.5 mm  
EndX: 0.00 in  
EndY: 0.00 in  
Area: 11.86 in<sup>2</sup>  
Max Stitch: 6.9 mm  
Min Stitch: 0.0 mm  
Max jump: 6.9 mm  
Total Thread: 284.44ft  
Total bobbin: 103.72ft



### Stop Sequence:

#	N#	St.	Code	Description	Brand
1.	14	■	9721	1000 Emerald Black	Madreira Classic 40
2.	13	□	6802	1001 Super White	Madreira Classic 40

# Production Worksheet

Wilcom TrueSizer  
Design: E-20308 5x5  
Colorway: Madeira Classic 40

Stitches: 22643  
Colors: 2  
Height: 4.82 in  
Width: 3.92 in  
Zoom: 1.24



Machine format: Tajima  
Color changes: 1  
Stops: 2  
Trims: 12  
Auto fabric: Fabric Name  
Required stabilizer: Stabilizer  
Left: 49.8 mm  
Right: 49.8 mm  
Up: 61.2 mm  
Down: 61.2 mm  
EndX: 0.00 in  
EndY: 0.00 in  
Area: 18.92 in<sup>2</sup>  
Max Stitch: 7.0 mm  
Min Stitch: 0.1 mm  
Max jump: 7.0 mm  
Total Thread: 419.22ft  
Total bobbin: 159.80ft

### Stop Sequence:

#	N#	St.	Code	Description	Brand
1.	14	■	14086	1000 Emerald Black	Madeira Classic 40
2.	13	□	8555	1001 Super White	Madeira Classic 40





# Production Worksheet

Wilcom TrueSizer  
Design: E-20308 6x6  
Colorway: Madeira Classic 40

Stitches: 29524  
Colors: 2  
Height: 5.82 in  
Width: 4.72 in  
Zoom: 1.03



Machine format: Tajima  
Color changes: 1  
Stops: 2  
Trims: 13  
Auto fabric: Fabric Name  
Required stabilizer: Stabilizer  
Left: 60.0 mm  
Right: 60.0 mm  
Up: 73.9 mm  
Down: 73.9 mm  
EndX: 0.00 in  
EndY: 0.00 in  
Area: 27.48 in<sup>2</sup>  
Max Stitch: 8.3 mm  
Min Stitch: 0.1 mm  
Max jump: 7.0 mm  
Total Thread: 578.00ft  
Total bobbin: 227.13ft

### Stop Sequence:

#	N#	St.	Code	Description	Brand
1.	14	■	19185	1000 Emerald Black	Madeira Classic 40
2.	13	□	10337	1001 Super White	Madeira Classic 40



# Production Worksheet

Wilcom TrueSizer  
Design: E-20308 8x8  
Colorway: Madeira Classic 40

Stitches: 46538  
Colors: 2  
Height: 7.82 in  
Width: 6.32 in  
Zoom: 0.77



Machine format: Tajima  
Color changes: 1  
Stops: 2  
Trims: 11  
Auto fabric: Fabric Name  
Required stabilizer: Stabilizer  
Left: 80.2 mm  
Right: 80.2 mm  
Up: 99.3 mm  
Down: 99.3 mm  
EndX: 0.00 in  
EndY: 0.00 in  
Area: 49.40 in<sup>2</sup>  
Max Stitch: 8.0 mm  
Min Stitch: 0.1 mm  
Max jump: 6.9 mm  
Total Thread: 978.10ft  
Total bobbin: 398.07ft

### Stop Sequence:

#	N#	St.	Code	Description	Brand
1.	14	■	31758	1000 Emerald Black	Madeira Classic 40
2.	13	□	14778	1001 Super White	Madeira Classic 40

