

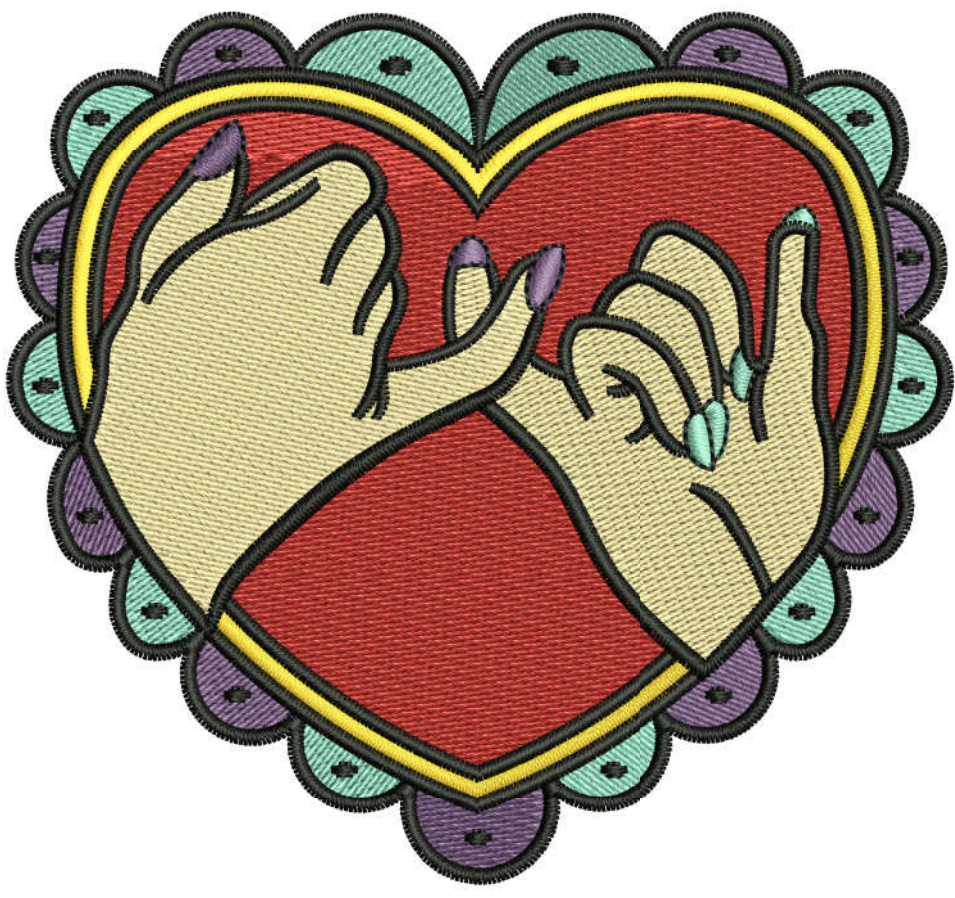
Production Worksheet

Wilcom TrueSizer
 Design: E-22958 4x4
 Colorway: Madeira Classic 40

Stitches: 24177
 Colors: 6
 Height: 3.46 in
 Width: 3.75 in
 Zoom: 1.31



Machine format: Tajima
 Color changes: 8
 Stops: 9
 Trims: 35
 Auto fabric: Fabric Name
 Required stabilizer: Stabilizer
 Left: 47.6 mm
 Right: 47.6 mm
 Up: 44.0 mm
 Down: 44.0 mm
 EndX: 0.00 in
 EndY: 0.00 in
 Area: 12.98 in²
 Max Stitch: 6.9 mm
 Min Stitch: 0.2 mm
 Max jump: 6.9 mm
 Total Thread: 427.32ft
 Total bobbin: 157.27ft



Stop Sequence:

| # | N# | St. | Code | Description | Brand |
|----|----|------|------|---------------|--------------------|
| 1. | 17 | 2576 | 1045 | Light Blue | Madeira Classic 40 |
| 2. | 11 | 2034 | 1033 | Purple | Madeira Classic 40 |
| 3. | 14 | 2311 | 1000 | Emerald Black | Madeira Classic 40 |
| 4. | 3 | 5368 | 1146 | Red | Madeira Classic 40 |
| 5. | 16 | 4446 | 1066 | Fune / Sand | Madeira Classic 40 |
| 6. | 17 | 171 | 1045 | Light Blue | Madeira Classic 40 |
| 7. | 11 | 139 | 1033 | Purple | Madeira Classic 40 |
| 8. | 4 | 1513 | 1064 | golden | Madeira Classic 40 |
| 9. | 14 | 5617 | 1000 | Emerald Black | Madeira Classic 40 |

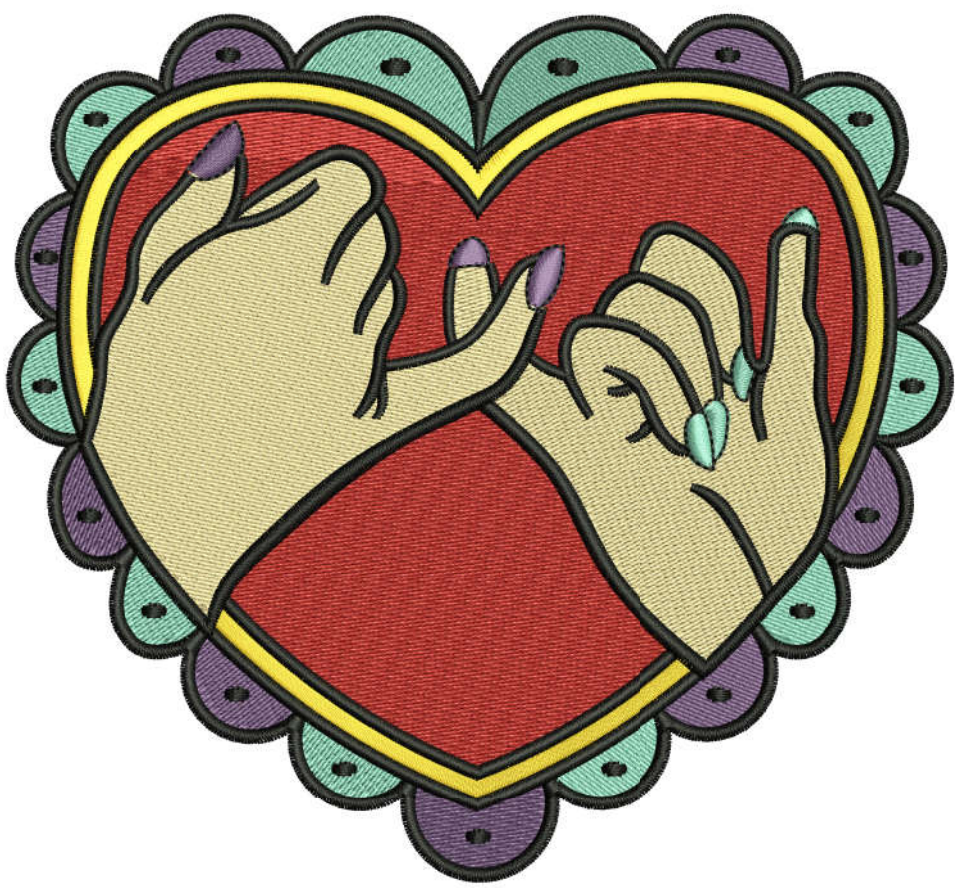
Production Worksheet

Wilcom TrueSizer
Design: E-22958 6x6
Colorway: Madeira Classic 40

Stitches: 39244
Colors: 6
Height: 4.82 in
Width: 5.24 in
Zoom: 0.94



Machine format: Tajima
Color changes: 8
Stops: 9
Trims: 37
Auto fabric: Fabric Name
Required stabilizer: Stabilizer
Left: 66.6 mm
Right: 66.6 mm
Up: 61.3 mm
Down: 61.2 mm
EndX: 0.00 in
EndY: 0.00 in
Area: 25.28 in²
Max Stitch: 7.3 mm
Min Stitch: 0.3 mm
Max jump: 7.0 mm
Total Thread: 755.67ft
Total bobbin: 293.26ft



Stop Sequence:

| # | N# | St. | Code | Description | Brand |
|----|----|-----|------|--------------------|--------------------|
| 1. | 17 | ■ | 4235 | 1045 Light Blue | Madeira Classic 40 |
| 2. | 11 | ■ | 3406 | 1033 Purple | Madeira Classic 40 |
| 3. | 14 | ■ | 3331 | 1000 Emerald Black | Madeira Classic 40 |
| 4. | 3 | ■ | 9560 | 1146 Red | Madeira Classic 40 |
| 5. | 16 | ■ | 8002 | 1066 Fune / Sand | Madeira Classic 40 |
| 6. | 17 | ■ | 233 | 1045 Light Blue | Madeira Classic 40 |
| 7. | 11 | ■ | 198 | 1033 Purple | Madeira Classic 40 |
| 8. | 4 | ■ | 2425 | 1064 golden | Madeira Classic 40 |
| 9. | 14 | ■ | 7852 | 1000 Emerald Black | Madeira Classic 40 |