

# Production Worksheet

Wilcom TrueSizer

Design: E-22726 4x4

Colorway: Madeira Classic 40

Stitches: 10611  
Colors: 2  
Height: 3.63 in  
Width: 3.82 in  
Zoom: 1:1



Machine format: Tajima  
Color changes: 2  
Stops: 3  
Trims: 16  
Auto fabric: Fabric Name  
Required stabilizer: Stabilizer  
Left: 48.5 mm  
Right: 48.5 mm  
Up: 46.1 mm  
Down: 46.1 mm  
EndX: 0.00 in  
EndY: 0.00 in  
Area: 13.88 in<sup>2</sup>  
Max Stitch: 7.5 mm  
Min Stitch: 0.3 mm  
Max jump: 7.0 mm  
Total Thread: 150.80ft  
Total bobbin: 47.32ft

### Stop Sequence:

#	N#	St.	Code	Description	Brand
1.	13	<input type="checkbox"/>	2781	1001 Super White	Madeira Classic 40
2.	4	<input checked="" type="checkbox"/>	5739	1064 golden	Madeira Classic 40
3.	13	<input type="checkbox"/>	2089	1001 Super White	Madeira Classic 40



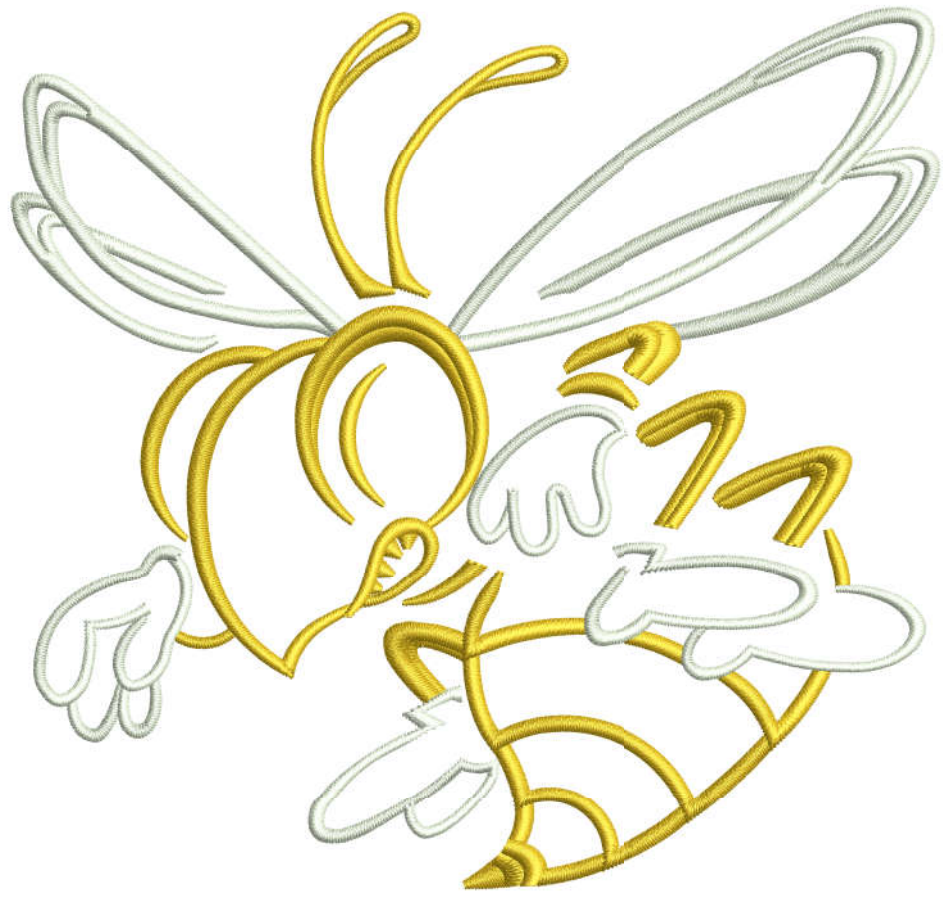
# Production Worksheet

Wilcom TrueSizer  
Design: E-22726 5x5  
Colorway: Madeira Classic 40

Stitches: 13485  
Colors: 2  
Height: 4.59 in  
Width: 4.82 in  
Zoom: 1:1



Machine format: Tajima  
Color changes: 2  
Stops: 3  
Trims: 16  
Auto fabric: Fabric Name  
Required stabilizer: Stabilizer  
Left: 61.2 mm  
Right: 61.2 mm  
Up: 58.3 mm  
Down: 58.3 mm  
EndX: 0.00 in  
EndY: 0.00 in  
Area: 22.14 in<sup>2</sup>  
Max Stitch: 9.1 mm  
Min Stitch: 0.3 mm  
Max jump: 6.8 mm  
Total Thread: 207.00ft  
Total bobbin: 69.46ft



### Stop Sequence:

#	N#	St.	Code	Description	Brand
1.	13	<input type="checkbox"/>	3553	1001 Super White	Madeira Classic 40
2.	4	<input checked="" type="checkbox"/>	7270	1064 golden	Madeira Classic 40
3.	13	<input type="checkbox"/>	2660	1001 Super White	Madeira Classic 40

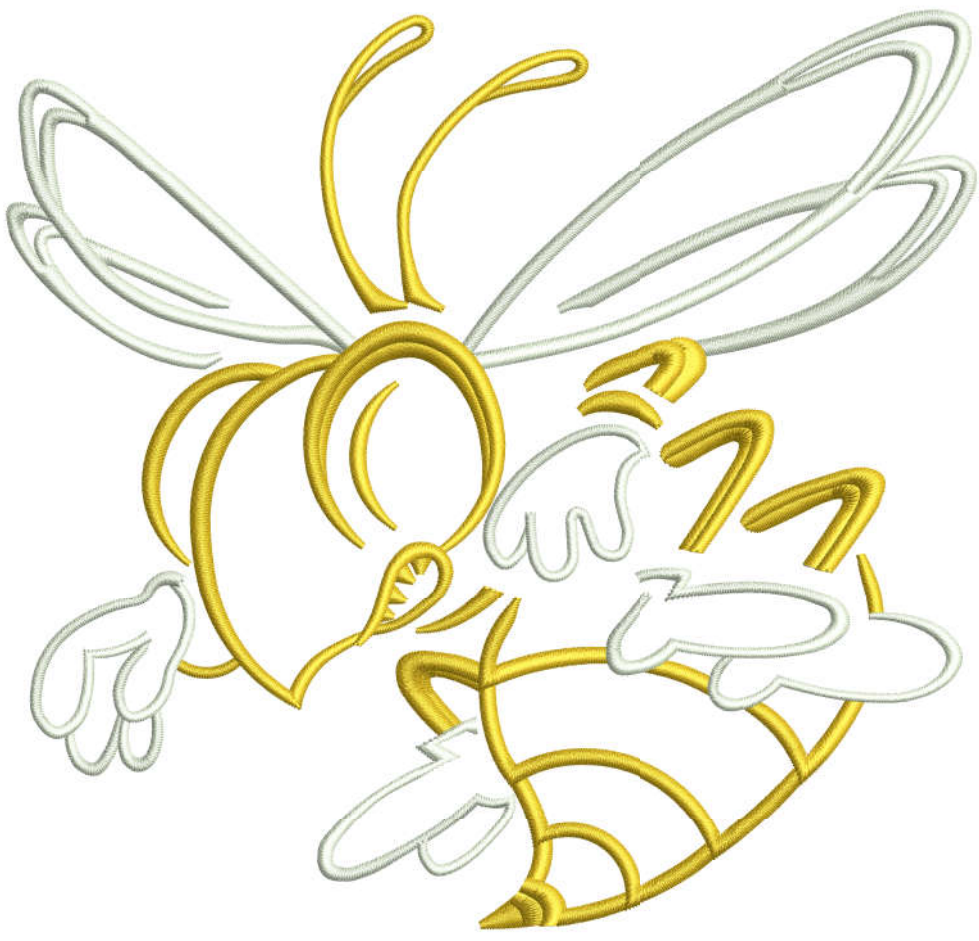
# Production Worksheet

Wilcom TrueSizer  
Design: E-22726 6x6  
Colorway: Madeira Classic 40

Stitches: 16390  
Colors: 2  
Height: 5.53 in  
Width: 5.82 in  
Zoom: 0.87



Machine format: Tajima  
Color changes: 2  
Stops: 3  
Trims: 16  
Auto fabric: Fabric Name  
Required stabilizer: Stabilizer  
Left: 73.9 mm  
Right: 73.9 mm  
Up: 70.3 mm  
Down: 70.3 mm  
EndX: 0.00 in  
EndY: 0.00 in  
Area: 32.21 in<sup>2</sup>  
Max Stitch: 11.0 mm  
Min Stitch: 0.3 mm  
Max jump: 7.0 mm  
Total Thread: 270.60ft  
Total bobbin: 95.85ft



Stop Sequence:

#	N#	St.	Code	Description	Brand
1.	13	<input type="checkbox"/>	4332	1001 Super White	Madeira Classic 40
2.	4	<input checked="" type="checkbox"/>	8832	1064 golden	Madeira Classic 40
3.	13	<input type="checkbox"/>	3224	1001 Super White	Madeira Classic 40

# Production Worksheet

Wilcom TrueSizer  
Design: E-22726 8x8  
Colorway: Madeira Classic 40

Stitches: 22697  
Colors: 2  
Height: 7.47 in  
Width: 7.82 in  
Zoom: 0.64



Machine format: Tajima  
Color changes: 2  
Stops: 3  
Trims: 16  
Auto fabric: Fabric Name  
Required stabilizer: Stabilizer  
Left: 99.3 mm  
Right: 99.3 mm  
Up: 94.9 mm  
Down: 94.9 mm  
EndX: 0.00 in  
EndY: 0.00 in  
Area: 58.45 in<sup>2</sup>  
Max Stitch: 7.0 mm  
Min Stitch: 0.3 mm  
Max jump: 7.0 mm  
Total Thread: 428.33ft  
Total bobbin: 164.79ft



Stop Sequence:

#	N#	St.	Code	Description	Brand
1.	13	<input type="checkbox"/>	6013	1001 Super White	Madeira Classic 40
2.	4	<input checked="" type="checkbox"/>	12262	1064 golden	Madeira Classic 40
3.	13	<input type="checkbox"/>	4420	1001 Super White	Madeira Classic 40