

Production Worksheet

Wilcom TrueSizer
Design: E-20704 4x4
Colorway: Madeira Classic 40

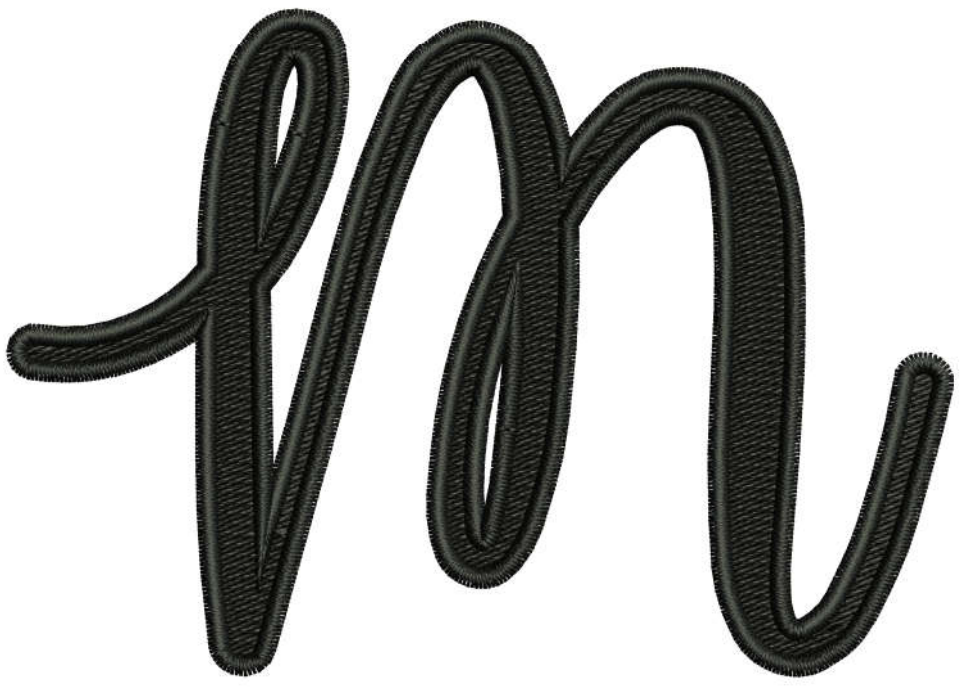
Stitches: 9545
Colors: 1
Height: 2.69 in
Width: 3.80 in
Zoom: 1.29



Machine format: Tajima
Color changes: 0
Stops: 1
Trims: 4
Auto fabric: Fabric Name
Required stabilizer: Stabilizer
Left: 48.3 mm
Right: 48.3 mm
Up: 34.1 mm
Down: 34.1 mm
EndX: 0.00 in
EndY: 0.00 in
Area: 10.20 in²
Max Stitch: 6.5 mm
Min Stitch: 0.4 mm
Max jump: 6.5 mm
Total Thread: 160.46ft
Total bobbin: 57.59ft

Stop Sequence:

#	N#	St.	Code	Description	Brand
1.	14	■	9543	1000 Emerald Black	Madeira Classic 40



Production Worksheet

Wilcom TrueSizer
Design: E-20704 5x5
Colorway: Madeira Classic 40

Stitches: 13086
Colors: 1
Height: 3.38 in
Width: 4.80 in
Zoom: 1.01



Machine format: Tajima
Color changes: 0
Stops: 1
Trims: 4
Auto fabric: Fabric Name
Required stabilizer: Stabilizer
Left: 61.0 mm
Right: 61.0 mm
Up: 42.9 mm
Down: 42.9 mm
EndX: 0.00 in
EndY: 0.00 in
Area: 16.22 in²
Max Stitch: 6.8 mm
Min Stitch: 0.4 mm
Max jump: 6.8 mm
Total Thread: 239.96ft
Total bobbin: 90.93ft

Stop Sequence:

#	N#	St.	Code	Description	Brand
1.	14	■	13084	1000 Emerald Black	Madreira Classic 40



Production Worksheet

Wilcom TrueSizer
Design: E-20704 6x6
Colorway: Madeira Classic 40

Stitches: 16985
Colors: 1
Height: 4.06 in
Width: 5.80 in
Zoom: 0.84



Machine format: Tajima
Color changes: 0
Stops: 1
Trims: 4
Auto fabric: Fabric Name
Required stabilizer: Stabilizer
Left: 73.7 mm
Right: 73.7 mm
Up: 51.6 mm
Down: 51.6 mm
EndX: 0.00 in
EndY: 0.00 in
Area: 23.57 in²
Max Stitch: 6.4 mm
Min Stitch: 0.3 mm
Max jump: 6.4 mm
Total Thread: 331.77ft
Total bobbin: 130.17ft



Stop Sequence:

#	N#	St.	Code	Description	Brand
1.	14	■	16983	1000 Emerald Black	Madeira Classic 40

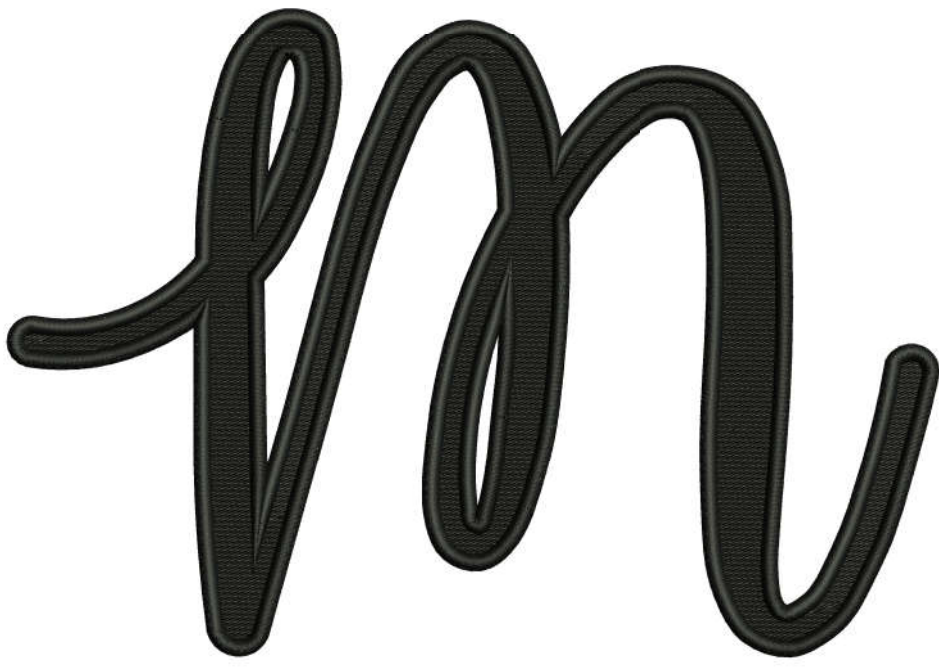
Production Worksheet

Wilcom TrueSizer
Design: E-20704 8x8
Colorway: Madeira Classic 40

Stitches: 25946
Colors: 1
Height: 5.43 in
Width: 7.79 in
Zoom: 0.62



Machine format: Tajima
Color changes: 0
Stops: 1
Trims: 4
Auto fabric: Fabric Name
Required stabilizer: Stabilizer
Left: 98.9 mm
Right: 98.9 mm
Up: 68.9 mm
Down: 68.9 mm
EndX: 0.00 in
EndY: 0.00 in
Area: 42.26 in²
Max Stitch: 6.7 mm
Min Stitch: 0.4 mm
Max jump: 6.7 mm
Total Thread: 540.85ft
Total bobbin: 219.23ft



Stop Sequence:

#	N#	St.	Code	Description	Brand
1.	14	■	25944	1000 Emerald Black	Madeira Classic 40