

Production Worksheet

Wilcom TrueSizer
Design: E-20324 4x4
Colorway: Madeira Classic 40

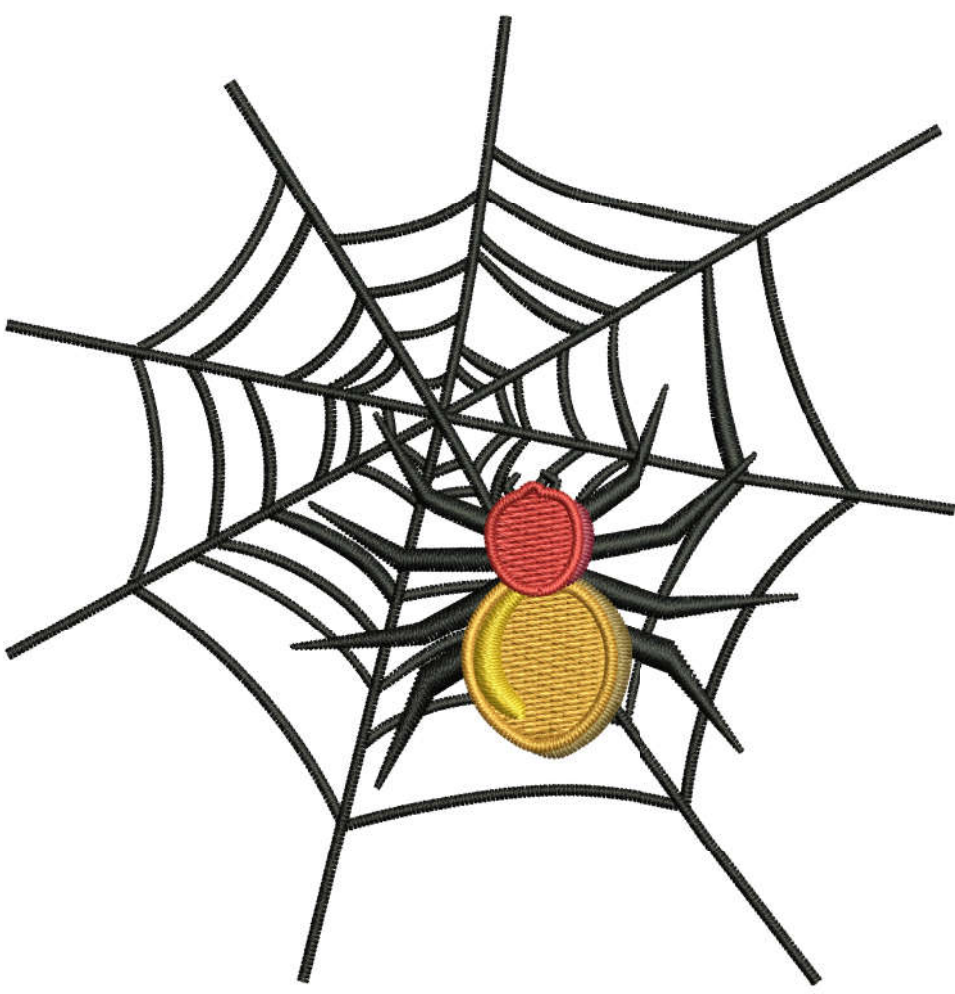
Stitches: 8710
Colors: 6
Height: 3.80 in
Width: 3.71 in
Zoom: 1.33



Machine format: Tajima
Color changes: 5
Stops: 6
Trims: 6
Auto fabric: Fabric Name
Required stabilizer: Stabilizer
Left: 47.1 mm
Right: 47.1 mm
Up: 48.3 mm
Down: 48.3 mm
EndX: 0.00 in
EndY: 0.00 in
Area: 14.09 in²
Max Stitch: 8.7 mm
Min Stitch: 0.3 mm
Max jump: 6.9 mm
Total Thread: 116.33ft
Total bobbin: 33.71ft

Stop Sequence:

#	N#	St.	Code	Description	Brand
1.	14	■	7261 1000	Emerald Black	Madeira Classic 40
2.	12	■	176 1191	Brown	Madeira Classic 40
3.	10	■	716 1172	Orange	Madeira Classic 40
4.	4	■	114 1064	golden	Madeira Classic 40
5.	9	■	73 1281	Marron	Madeira Classic 40
6.	3	■	368 1146	Red	Madeira Classic 40



Production Worksheet

Wilcom TrueSizer
Design: E-20324 5x5
Colorway: Madeira Classic 40

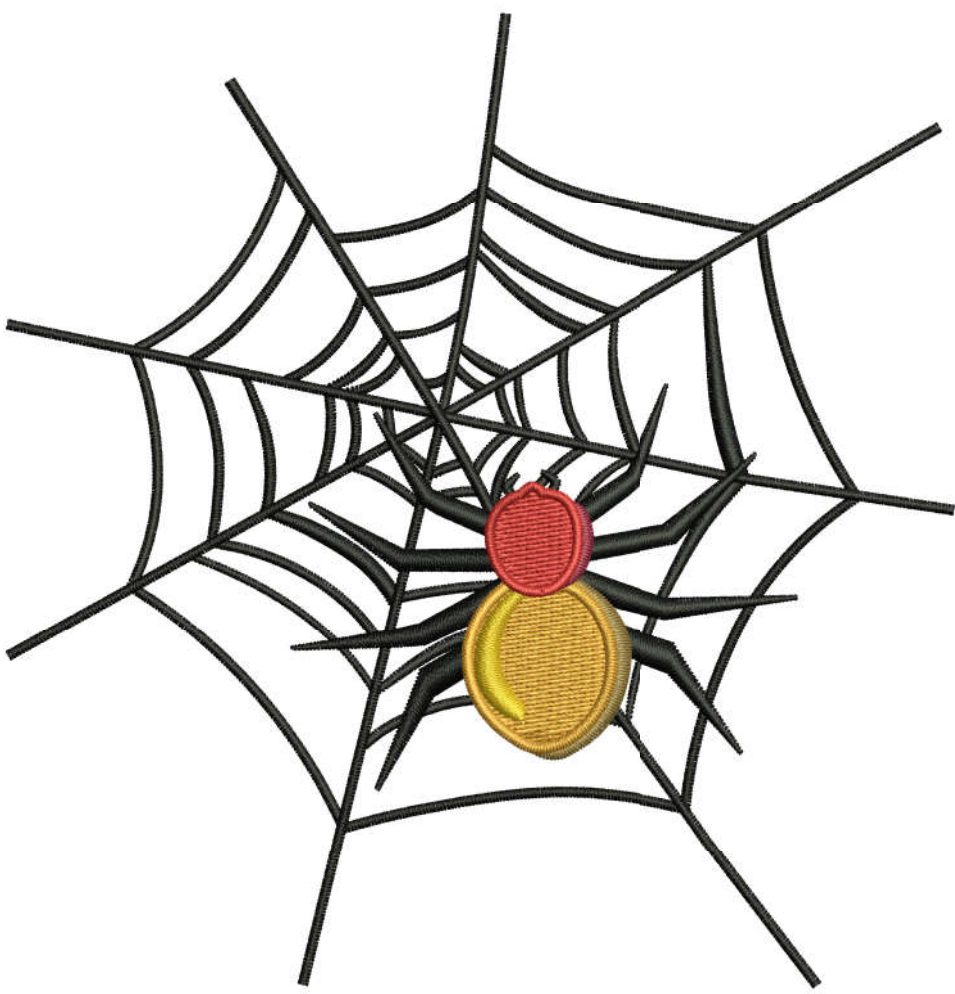
Stitches: 11110
Colors: 6
Height: 4.80 in
Width: 4.65 in
Zoom: 1.06



Machine format: Tajima
Color changes: 5
Stops: 6
Trims: 6
Auto fabric: Fabric Name
Required stabilizer: Stabilizer
Left: 59.1 mm
Right: 59.1 mm
Up: 61.0 mm
Down: 61.0 mm
EndX: 0.00 in
EndY: 0.00 in
Area: 22.33 in²
Max Stitch: 11.0 mm
Min Stitch: 0.3 mm
Max jump: 6.9 mm
Total Thread: 158.02ft
Total bobbin: 49.08ft

Stop Sequence:

#	N#	St.	Code	Description	Brand
1.	14	■	9179 1000	Emerald Black	Madeira Classic 40
2.	12	■	225 1191	Brown	Madeira Classic 40
3.	10	■	979 1172	Orange	Madeira Classic 40
4.	4	■	145 1064	golden	Madeira Classic 40
5.	9	■	90 1281	Marron	Madeira Classic 40
6.	3	■	490 1146	Red	Madeira Classic 40



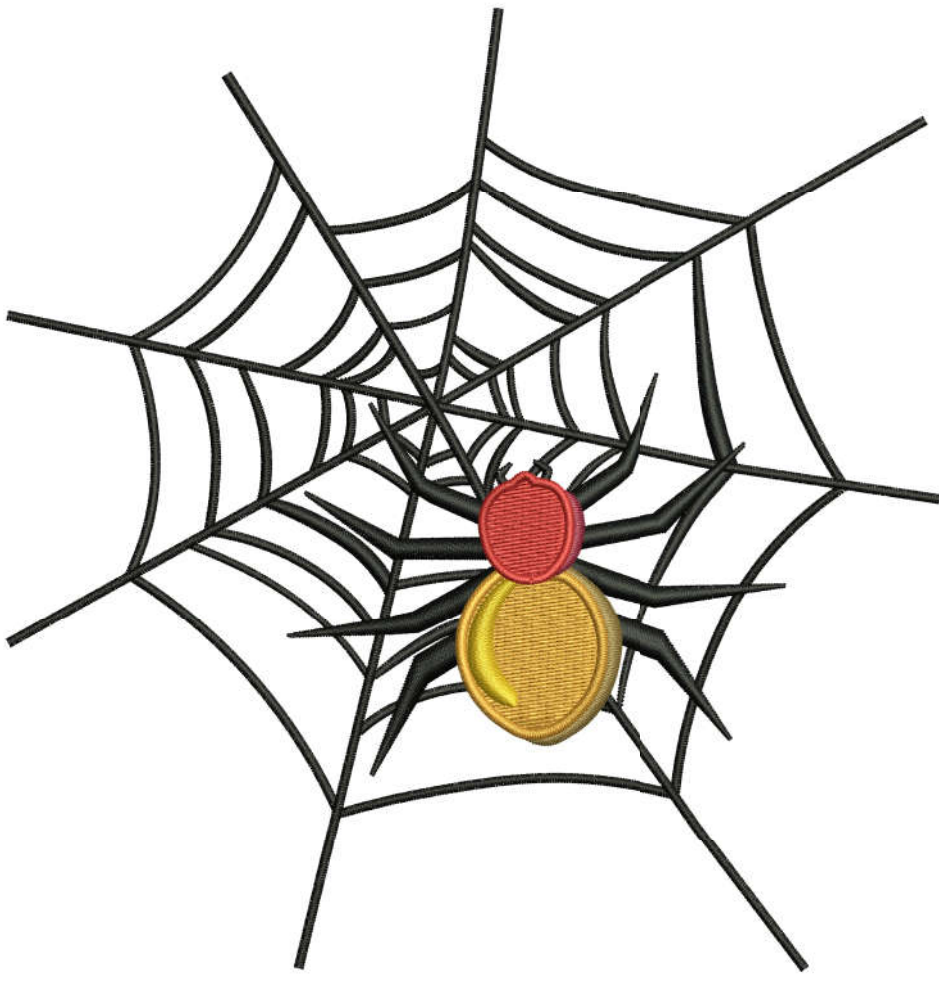
Production Worksheet

Wilcom TrueSizer
Design: E-20324 6x6
Colorway: Madeira Classic 40

Stitches: 13662
Colors: 6
Height: 5.80 in
Width: 5.61 in
Zoom: 0.86



Machine format: Tajima
Color changes: 5
Stops: 6
Trims: 7
Auto fabric: Fabric Name
Required stabilizer: Stabilizer
Left: 71.2 mm
Right: 71.2 mm
Up: 73.7 mm
Down: 73.7 mm
EndX: 0.00 in
EndY: 0.00 in
Area: 32.52 in²
Max Stitch: 7.4 mm
Min Stitch: 0.3 mm
Max jump: 7.0 mm
Total Thread: 205.97ft
Total bobbin: 67.57ft



Stop Sequence:

#	N#	St.	Code	Description	Brand
1.	14	■	11165	1000 Emerald Black	Madeira Classic 40
2.	12	■	274	1191 Brown	Madeira Classic 40
3.	10	■	1304	1172 Orange	Madeira Classic 40
4.	4	■	176	1064 golden	Madeira Classic 40
5.	9	■	107	1281 Marron	Madeira Classic 40
6.	3	■	634	1146 Red	Madeira Classic 40

Production Worksheet

Wilcom TrueSizer
Design: E-20324 8x8
Colorway: Madeira Classic 40

Stitches: 19145
Colors: 6
Height: 7.81 in
Width: 7.51 in
Zoom: 0.65



Machine format: Tajima
Color changes: 5
Stops: 6
Trims: 6
Auto fabric: Fabric Name
Required stabilizer: Stabilizer
Left: 95.3 mm
Right: 95.3 mm
Up: 99.1 mm
Down: 99.1 mm
EndX: 0.00 in
EndY: 0.00 in
Area: 58.58 in²
Max Stitch: 9.8 mm
Min Stitch: 0.3 mm
Max jump: 6.9 mm
Total Thread: 321.16ft
Total bobbin: 114.51ft

Stop Sequence:

#	N#	St.	Code	Description	Brand
1.	14	■	15312	1000 Emerald Black	Madeira Classic 40
2.	12	■	389	1191 Brown	Madeira Classic 40
3.	10	■	2060	1172 Orange	Madeira Classic 40
4.	4	■	263	1064 golden	Madeira Classic 40
5.	9	■	148	1281 Marron	Madeira Classic 40
6.	3	■	971	1146 Red	Madeira Classic 40

