

Production Worksheet

Wilcom TrueSizer
Design: E-20573 4x4
Colorway: Madeira Classic 40

Stitches: 7253
Colors: 1
Height: 3.80 in
Width: 3.59 in
Zoom: 1.37



Machine format: Tajima
Color changes: 0
Stops: 1
Trims: 1
Auto fabric: Fabric Name
Required stabilizer: Stabilizer
Left: 45.6 mm
Right: 45.6 mm
Up: 48.3 mm
Down: 48.3 mm
EndX: 0.00 in
EndY: 0.00 in
Area: 13.67 in²
Max Stitch: 6.1 mm
Min Stitch: 0.3 mm
Max jump: 6.8 mm
Total Thread: 123.92ft
Total bobbin: 44.84ft



Stop Sequence:

#	N#	St.	Code	Description	Brand
1.	14	■	7251	1000 Emerald Black	Madeira Classic 40

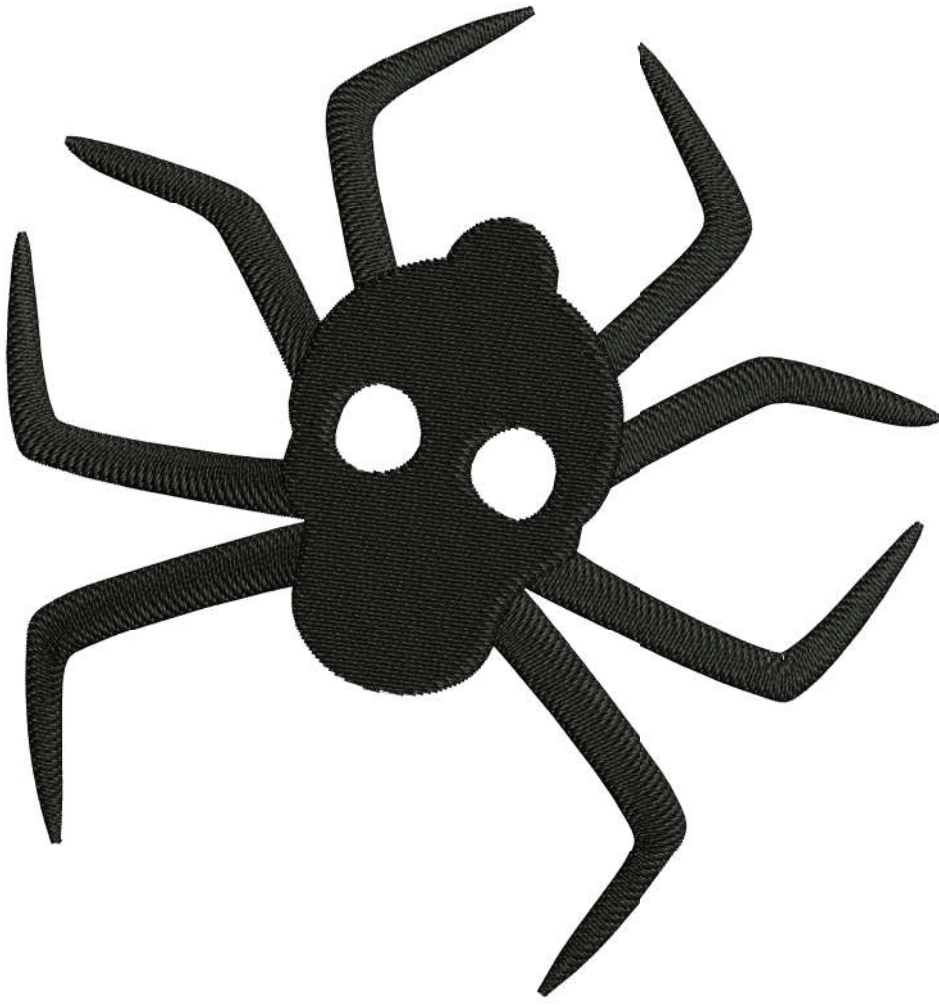
Production Worksheet

Wilcom TrueSizer
Design: E-20573 5x5
Colorway: Madeira Classic 40

Stitches: 10344
Colors: 1
Height: 4.80 in
Width: 4.52 in
Zoom: 1.07



Machine format: Tajima
Color changes: 0
Stops: 1
Trims: 1
Auto fabric: Fabric Name
Required stabilizer: Stabilizer
Left: 57.4 mm
Right: 57.4 mm
Up: 61.0 mm
Down: 61.0 mm
EndX: 0.00 in
EndY: 0.00 in
Area: 21.69 in²
Max Stitch: 5.8 mm
Min Stitch: 0.3 mm
Max jump: 6.9 mm
Total Thread: 184.87ft
Total bobbin: 68.94ft



Stop Sequence:

#	N#	St.	Code	Description	Brand
1.	14	■	10342	1000 Emerald Black	Madeira Classic 40

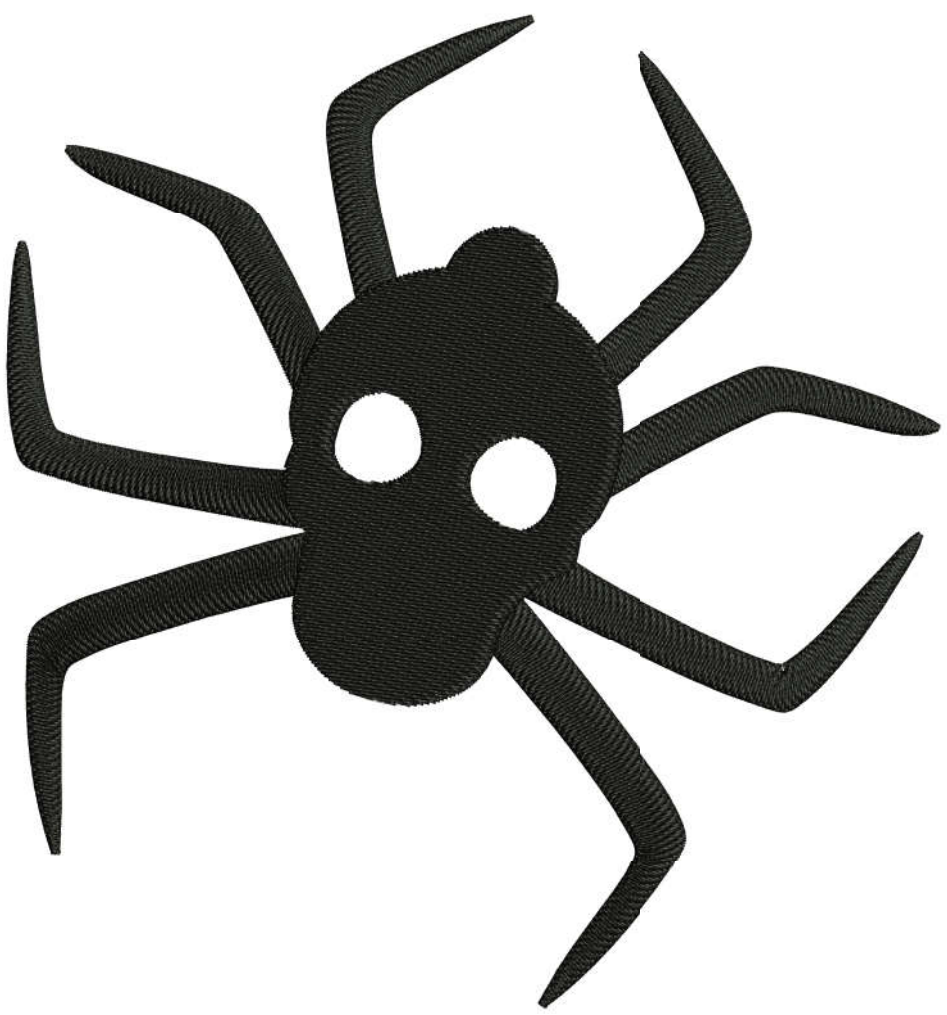
Production Worksheet

Wilcom TrueSizer
Design: E-20573 6x6
Colorway: Madeira Classic 40

Stitches: 13762
Colors: 1
Height: 5.80 in
Width: 5.44 in
Zoom: 0.89



Machine format: Tajima
Color changes: 0
Stops: 1
Trims: 1
Auto fabric: Fabric Name
Required stabilizer: Stabilizer
Left: 69.0 mm
Right: 69.0 mm
Up: 73.6 mm
Down: 73.6 mm
EndX: 0.00 in
EndY: 0.00 in
Area: 31.51 in²
Max Stitch: 6.8 mm
Min Stitch: 0.3 mm
Max jump: 6.9 mm
Total Thread: 256.55ft
Total bobbin: 98.13ft



Stop Sequence:

#	N#	St.	Code	Description	Brand
1.	14	■	13760	1000 Emerald Black	Madeira Classic 40

Production Worksheet

Wilcom TrueSizer
Design: E-20573 8x8
Colorway: Madeira Classic 40

Stitches: 22338
Colors: 1
Height: 7.80 in
Width: 7.28 in
Zoom: 0.67



Machine format: Tajima
 Color changes: 0
 Stops: 1
 Trims: 1
 Auto fabric: Fabric Name
 Required stabilizer: Stabilizer
 Left: 92.4 mm
 Right: 92.4 mm
 Up: 99.0 mm
 Down: 99.0 mm
 EndX: 0.00 in
 EndY: 0.00 in
 Area: 56.73 in²
 Max Stitch: 6.0 mm
 Min Stitch: 0.3 mm
 Max jump: 6.3 mm
 Total Thread: 437.78ft
 Total bobbin: 172.18ft

Stop Sequence:

#	N#	St.	Code	Description	Brand
1.	14	■	22336	1000 Emerald Black	Madeira Classic 40